

Operational oceanography

for the oceans
and operations at sea



Who are we?

As a leader in the field of operational oceanography, Actimar improves the technical, economic, and environmental performance of your maritime and coastal projects. Composed of some twenty highly qualified oceanographic and computer engineers, our team provides multidisciplinary expertise for innovative metocean studies and services.

The proximity of our experts at the heart of our commitment

While our customers recommend us for our flexibility, our responsiveness, and our scientific rigour, it is the proximity with our experts that has characterised Actimar's commitment to more than 1,000 references for over 20 years.

They are graduates of the most advanced training programmes and provide personalised support for your projects, from preliminary studies to decision support systems, including impact studies and monitoring in the operational phase.

The multidisciplinary team offers the highest levels of expertise in physical oceanography (seastates, agitation, currents, hydrology), sedimentology (sediment transport, morphodynamics), marine ecology (biogeochemistry, eutrophication), data science (machine learning, neural networks).

A pioneer in the field of operational oceanography alongside public institutions (Shom, Ifremer) and industry (CMA CGM, TotalEnergies), Actimar invests heavily in Research & Development.

Its objective is to develop the most innovative solutions to meet the challenges of demanding sectors such as marine renewable energy, maritime transport, coastal and port development, water and waste, oil and gas industries, and national defence.



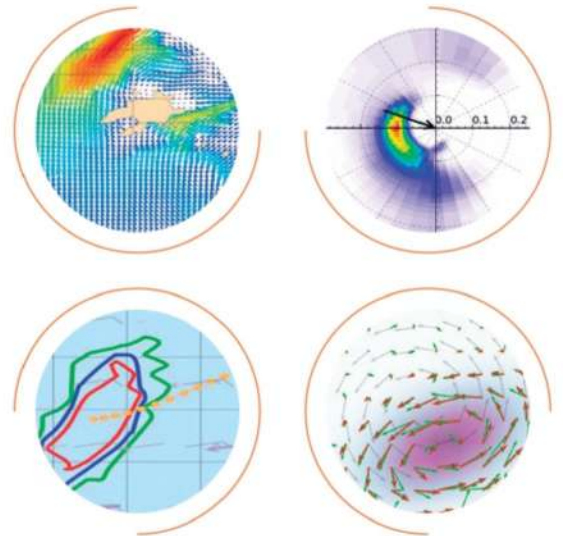


Our studies

Actimar analyses and models the atmosphere, sea states, currents, sediment transport and marine biogeochemistry.

Through its expertise in oceanography and numerical modelling, Actimar carries out engineering studies to:

- ⇒ **design and dimension maritime and coastal structures**
- ⇒ **prepare for operations at sea**
- ⇒ **ensure the environmental compatibility of projects**



These studies are based on global metocean databases and regional models, which we complement locally by building and implementing high-resolution numerical models.

Our methodological approach is to adapt the most appropriate tools to meet the challenges

of the projects. We develop modelling codes to deal with new problems. Modelling scenarios are systematically defined in consultation with our clients.

On average, more than 60 metocean and impact assessment studies are carried out each year worldwide.

Our services



Seamafor®, an operational decision support service for maritime, coastal, and deep-sea actors, allowing them to:



optimize maritime activities & operations



anticipate human and material risks



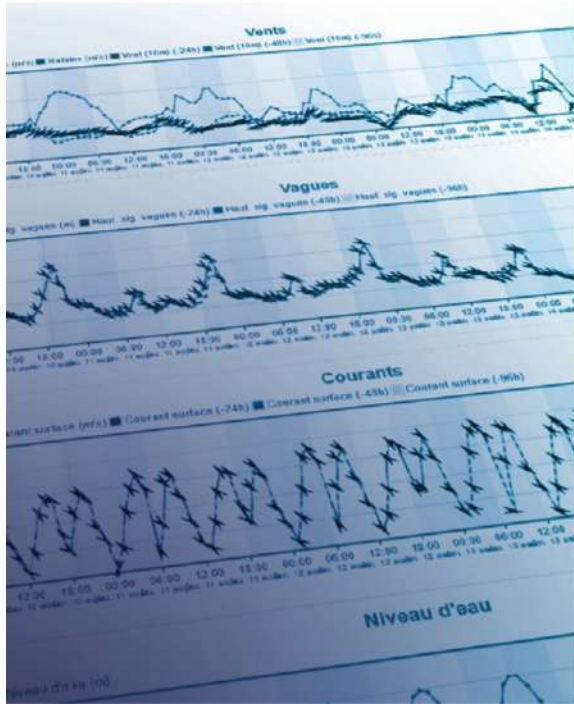
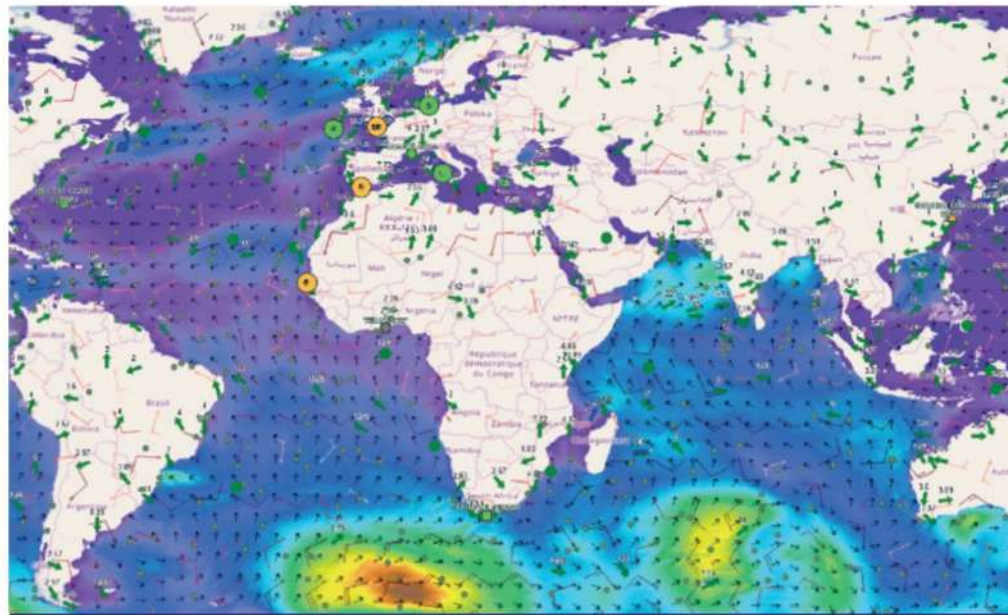
prevent and manage environmental risks

These services are available through a web-based platform. They are based on modeling systems, networks of measurements, and our metocean expertise.

Actimar integrates its operational services into a continuous improvement process based on proximity to its customers and their feedback.

The main features of Seamafor® are:

- Integration of data from observation networks and operational models.
- Detection and dissemination of alerts.
- Development and delivery of bulletins and other specific operational products.



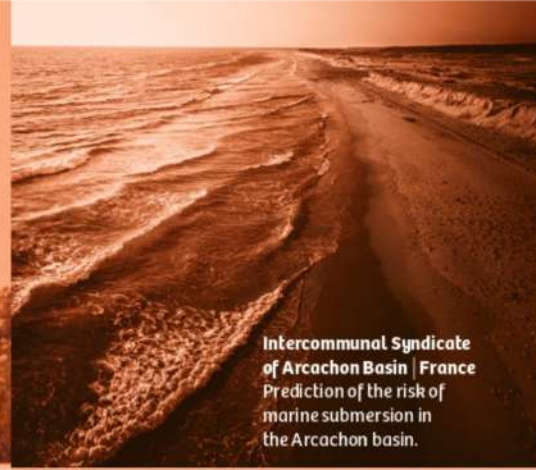
The advantages of Seamafor®

- ⇒ Unique, tailor-made operational products, specific to each client.
- ⇒ Customised user profiles.
- ⇒ Web interfaces to access data and products, and to modify and improve services.
- ⇒ Ongoing self-assessment of the reliability of services.
- ⇒ A hyper-vision system integrating a large amount of metocean data updated in real time.
- ⇒ Service availability over 99% of the time.

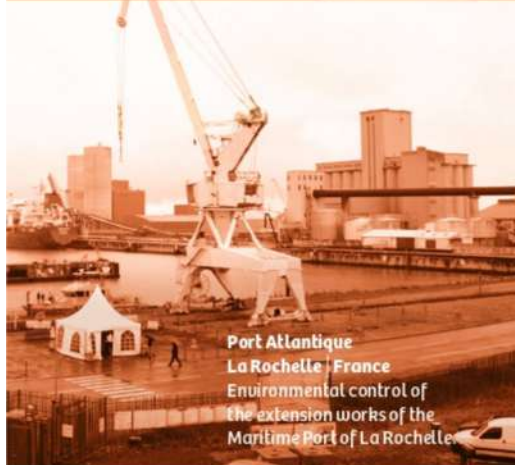
They trust us...



TotalEnergies | South Africa
Real-time meteocean forecasts and assistance to exploration operations.



Intercommunal Syndicate of Arcachon Basin | France
Prediction of the risk of marine submersion in the Arcachon basin.



Port Atlantique | La Rochelle | France
Environmental control of the extension works of the Maritime Port of La Rochelle.



Ailes Marines | France
Environmental control of the construction works of the offshore wind farm in the Bay of Saint-Brieuc.



CMA CGM | World
Anticipation of meteocean conditions and operability on maritime routes and in ports. Forecasting water levels and access windows for port terminals.

Our commitment

Actimar is committed to rigorously working with you and adapting to your needs. Our main objective is customer satisfaction. Our approach is global and integrated, from the preliminary studies to the operational services, based on the expertise required for your project.

What they say about us...



Responsive to needs, attentive and responsive to feedback.



Good quality of service, and good reactivity in respecting deadlines.



Very good quality of work, very professional, respectful of deadlines, very attentive to questions asked.



Ailes Marines

The work carried out completely met our needs and their experience exceeded our expectations in the design of the monitoring network.



Responsiveness, quality of the final report, perfect data sets delivered, and service performance.



Very efficient study, respect for deadlines, reactivity, and adaptability.



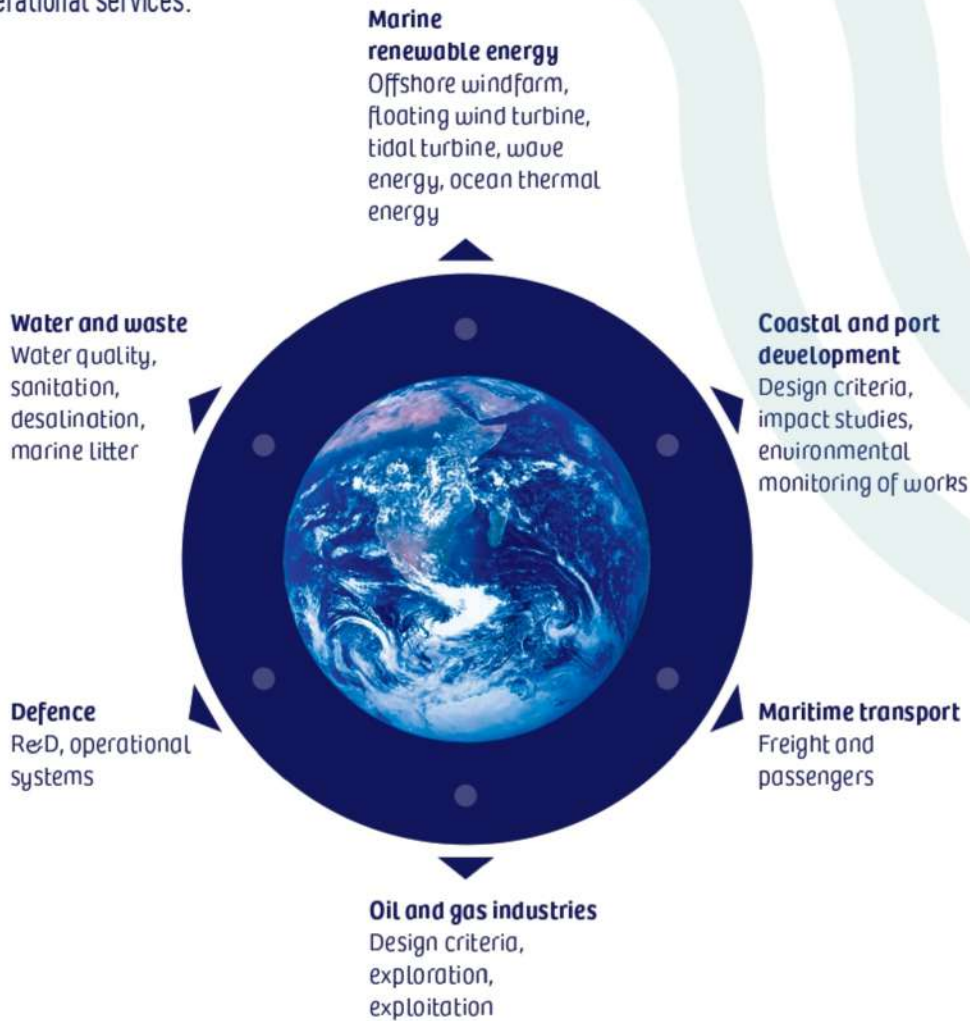
Particularly complex mission in Brest harbour with competence, organisation and reactivity.

Our strengths

- ⇒ **HIGH LEVEL OF EXPERTISE**
Recognised level of excellence in the maritime sector for both quality of deliverables and performance of services.
- ⇒ **AGILITY**
Strong reactivity and flexibility in the execution of studies and the implementation of services, respect for deadlines.
- ⇒ **PROXIMITY**
Permanent accompaniment of our clients to define together the most suitable methodology and level of service.
- ⇒ **SAFETY/ENVIRONMENT**
The safety of people and property is placed at the same level of priority as environmental issues.

Actimar, a leader in the maritime sector with global references

With more than 20 years of expertise and more than 1,000 references on the world's seas and oceans, Actimar, a subsidiary of the SUEZ Group, is one of the specialists in the maritime field. Our experts will accompany you from the preliminary studies to the tailor-made operational services.



+33 298 442 451



36 quai de la Douane
29200 Brest
France
info@actimar.fr

